

# WinPE Image Creator

Bootable, Deployable, Images



For **Pc-Check®** **Windows®**  
and **ZeroData Windows®**

A Support Reference Guide to Pc-Check® and ZeroData™ Windows®, this document contains important information for setting up various features in Pc-Check® and ZeroData™ Windows® and various test environments and supporting configurations.

© Eurosoft (UK) Ltd. 1988-2023. Pc-Check is a registered trademark of Eurosoft (UK) Ltd. PC Builder, Pc-Check Windows, Pc-Check, ZeroData, Virtual Pc-Check, USB Preferred Port Plug, CDT, DVDT, EuroDOS are trademark of Eurosoft (UK) Ltd. All other product trademarks are recognised as belonging to their respective owners.

**Note: Windows PE contains a security feature that will cause end user's systems to reboot without prior notification to the end user after 72 hours of continuous use.**

For questions or concerns about this publication or other Eurosoft publications and products please use the contact information below.

**Eurosoft (UK) Ltd.**

Head Office  
3 St. Stephen's Road  
Bournemouth  
Dorset BH2 6JL  
United Kingdom  
Tel +44 (0)1202 297315  
Fax +44 (0)1202 558280  
Email: [info@eurosoft-uk.com](mailto:info@eurosoft-uk.com)  
Website: [www.eurosoft-uk.com](http://www.eurosoft-uk.com)

**Eurosoft (US) Inc.**

US Office  
706 Jackson Street  
Sioux City, IA 51105  
USA  
Tel +1 (712) 255-7483  
Fax +1 [866] 615-9384  
Email: [info@eurosoft-us.com](mailto:info@eurosoft-us.com)  
Website: [www.eurosoft-us.com](http://www.eurosoft-us.com)

**Worldwide Information & Sales**

Europe, United States, Pacific Rim  
[info@eurosoft-uk.com](mailto:info@eurosoft-uk.com)

**Worldwide Support**

Europe, United States, Pacific Rim  
[support@eurosoft-uk.com](mailto:support@eurosoft-uk.com)

Visit our website for fast on-line sales and the latest news about the best Eurosoft solutions for you.

Or please contact your nearest Eurosoft office should you require additional software, accompanying manuals, or site license

Intellectual Property solely owned by Eurosoft (UK) Ltd and Eurosoft (US) Inc.  
*PC Builder Test Management Suite* is copyrighted by Eurosoft (US) Inc.  
*Pc-Check, Virtual Pc-Check, and Pc-Check Windows* are copyrighted by Eurosoft (UK) Ltd.  
*QA+Win* is copyrighted by Eurosoft (US) Inc.

## Contents

Overview .....	4
Minimum System Requirements .....	4
Getting Started.....	4
Getting Started with Eurosoft WinPE Image Creator .....	9
Advanced Options.....	11
STARTNET.CMD.....	11
RUNME.CMD.....	11
Packages.....	13
Drivers .....	13
Files .....	14
Applications Options.....	14
View in file explorer .....	14
Manage Applications .....	14

## Overview

This document has been written to give information about the basic operation of Pc-Check Windows and ZeroData Windows and the Eurosoft WinPE image Creator tool.

Eurosoft WinPE image Creator tool is supplied as a single executable file that contains all the diagnostics and the tools to create bootable images on USB Drives, CD-ROM's and PXE deployment. Once installed, bootable image creation tools are executed to deploy diagnostics to boot media. Under Windows operating system, it is possible to execute diagnostics directly from USB Drives and CD/DVD media.

Pc-Check Windows is a fast, accurate and easy-to-use diagnostic tool from Eurosoft that enables you to completely check the configuration and reliable operation of PCs installed with Windows. Pc-Check Windows is extremely useful to manufacturers and repairers of PCs, informing all Professionals of the architecture and operational reliability of PC hardware. It is assumed readers have greater technical experience than that of Windows® basic operation to gain full product usage. This manual is for standard Pc-Check Windows features.

Eurosoft ZeroData Windows permanently and safely removes all the data on hard drives exceeding the data destruction levels specified by major organizations and Government bodies for PC reassignment, upgrades, refurbishment, recycling and donation.

## Minimum System Requirements

Pc-Check and ZeroData Windows will run on Microsoft Windows® 7 SP3 or later operating systems. These are Windows® Server® 2012, 2016, 2019, Windows® 7 SP3, Windows® 8 & 8.1, Windows® 10, Windows®11. Windows is a registered trademark of Microsoft Corporation in the United States and other countries. DotNet 4.0 is required to execute Pc-Check Windows and Eurosoft WinPE image Creator.

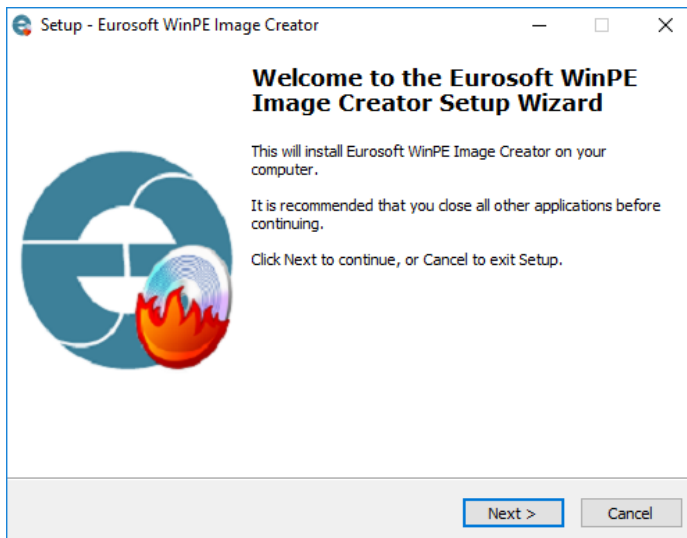
When creating USB images the USB Drive must have a minimum size of 2GB, and a maximum size of 32GB.

## Getting Started

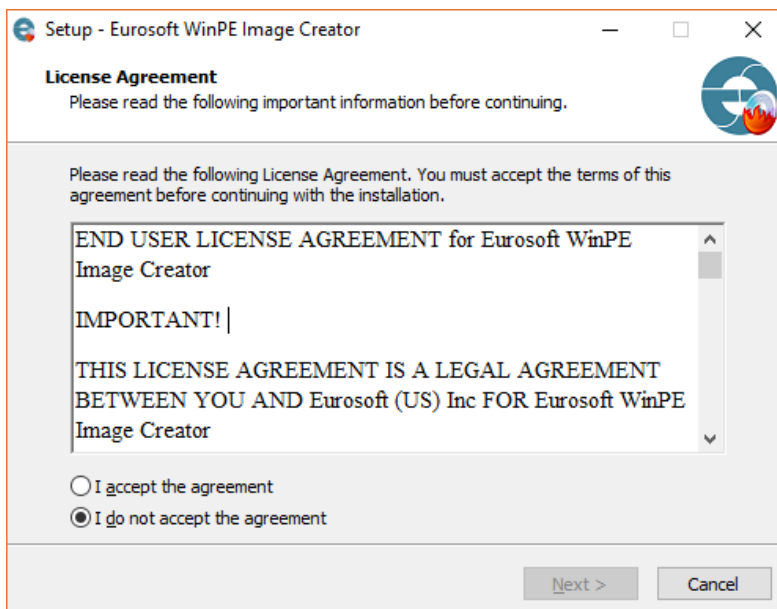
You will have received an executable file called WinPEImageCreator.exe. You will need a system running either Microsoft Windows 7 SP3 or above that is connected to the internet. Throughout this document this machine will be referred to as the technician PC.

On your technician PC execute the file WinPEImageCreator.exe, with Administrator rights.

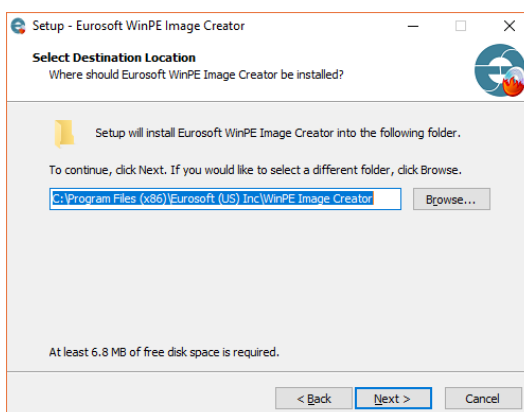
- The following screen will be displayed. Click "Next" to continue.



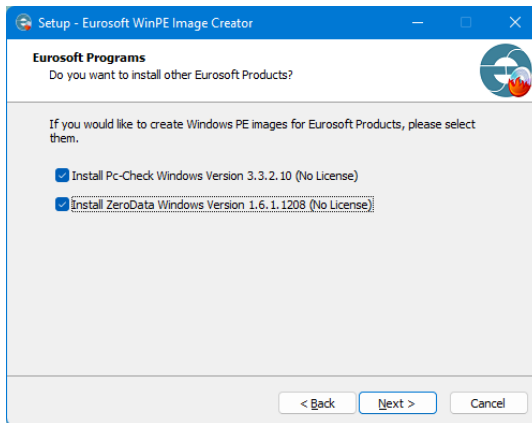
The following License Agreement screen will be displayed. Click “Next” to continue.



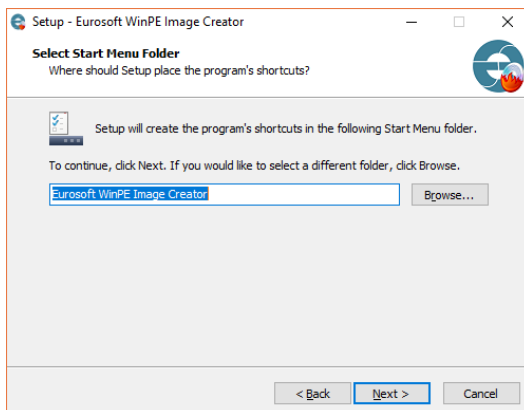
Select where to install the program, default values are recommended.



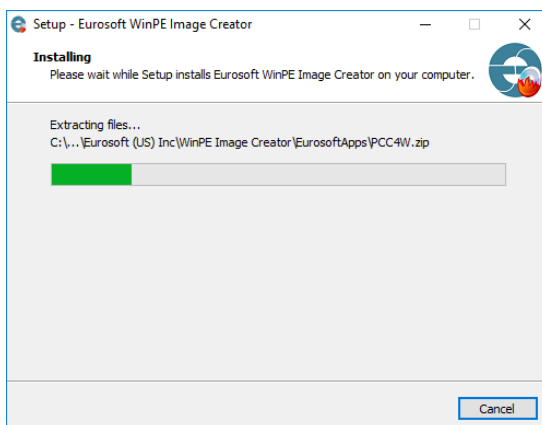
Product selection is available. Select the product you have purchased and want to install.



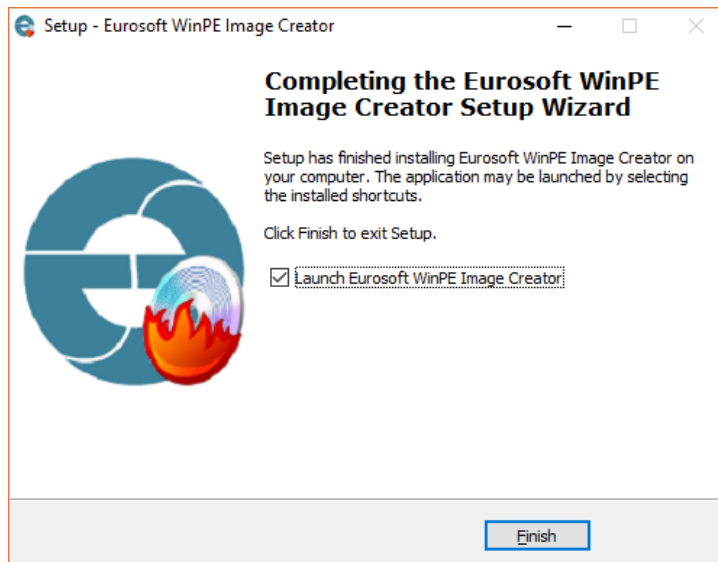
Select where you would like the shortcut menus to be created.



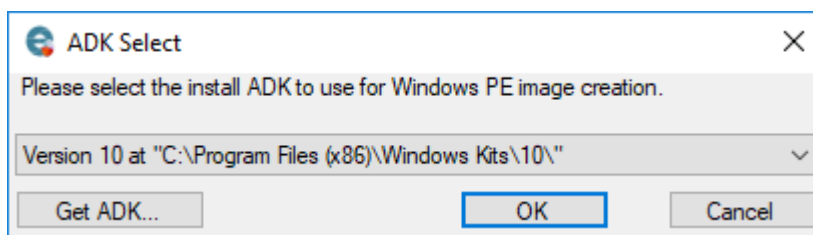
Application install process will start. This can take a few minutes.



After the installation has completed there will be new shortcuts on your desktop. One called WinPE Image Creator, one called each product you have installed and one for this document. Depending on what you want to do, either clear the "Launch" check boxes or not and click on "Finish".

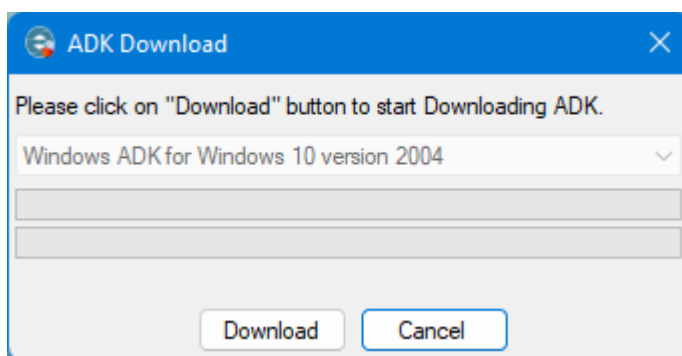


Note: Running WinPEImageCreator.exe will allow you to start building a deployment image immediately after selecting the ADK to use assuming you have one available.



On initialization the program will check for the presence of the Microsoft Windows ADK tools.

- If these are not installed on your system then you should select Get ADK... you will then be prompted to select which version of the ADK you wish to use for download installation.



Note: We recommend you build images using the designated ADK intended for the operating system running on the technician PC.

The installation of the ADK can take a long time, follow any on screen instructions.

The actual diagnostic package Pc-Check Windows or data erasure package ZeroData Windows are separate applications that are bundled and may be subject to a different licensing practice. Therefore, before creating a deployment image, it is a good practice to double click on installed application icons on the desktop to execute them to see if there is a problem. For example, you may have been sent a license file to use, this should be copied into the install location shown below for Pc-Check Windows or ZeroData Windows to execute properly.

By default, Eurosoft WinPE image Creator application installs itself to the following location: {OS Drive Letter:}\Program Files (x86)\Eurosoft (US) Inc\WinPE Image Creator.

Program Files (x86) > Eurosoft (US) Inc > WinPE Image Creator >

Name	Date modified	Type	Size
ADK	31/03/2022 16:53	File folder	
ConfigTemplates	02/11/2022 16:48	File folder	
Configurations	02/11/2022 16:50	File folder	
EurosoftApps	10/06/2022 15:02	File folder	
Log	02/11/2022 16:50	File folder	
Scripts	02/11/2022 17:09	File folder	
AppConfigurations.xml	02/11/2022 16:48	XML Document	1 KB
e-burning-disc-icon.ico	16/06/2022 13:07	Icon	128 KB
ESLM.dll	30/05/2022 17:21	Application exten...	867 KB
ESLM_x64.dll	30/05/2022 17:21	Application exten...	1,197 KB
EULA.rtf	16/06/2022 13:07	Rich Text Format	8 KB
Eurosoft WinPE Image Creator.pdf	16/06/2022 13:07	Microsoft Edge P...	1,522 KB
Pc-Check Suite Quick Start Guide.pdf	16/06/2022 13:07	Microsoft Edge P...	1,009 KB
Pc-Check Windows User Guide.pdf	16/06/2022 13:07	Microsoft Edge P...	3,971 KB
ProcessPrivileges.dll	09/09/2021 15:45	Application exten...	29 KB
unattend.xml	16/06/2022 13:07	XML Document	2 KB
unins000.dat	02/11/2022 16:48	DAT File	64 KB
unins000.exe	02/11/2022 16:48	Application	2,657 KB
WinPEImageCreator.exe	30/05/2022 16:21	Application	1,996 KB

By default, Pc-Check Windows application installs itself to the following location: {OS Drive Letter:}\Program Files (x86)\Eurosoft (US) Inc\WinPE Image Creator\EurosoftApps \PcCheckWindows.

:) > Program Files (x86) > Eurosoft (US) Inc > WinPE Image Creator > EurosoftApps > PcCheckWindows

Name	Date modified	Type	Size
EDF	16/03/2018 11:13	File folder	
Interface	16/03/2018 11:14	File folder	
Scripts	16/03/2018 11:14	File folder	
EDF_List.txt	26/01/2018 09:11	Text Document	14 KB
Eurosoft_Config.xml	20/02/2018 15:33	XML Document	5 KB
PcCheckWindows.cmd	29/02/2016 14:58	Windows Comma...	1 KB
PcCheckWindows.exe	01/03/2018 14:11	Application	4,323 KB
PcCheckWindows.exe.config	23/03/2017 16:23	CONFIG File	2 KB

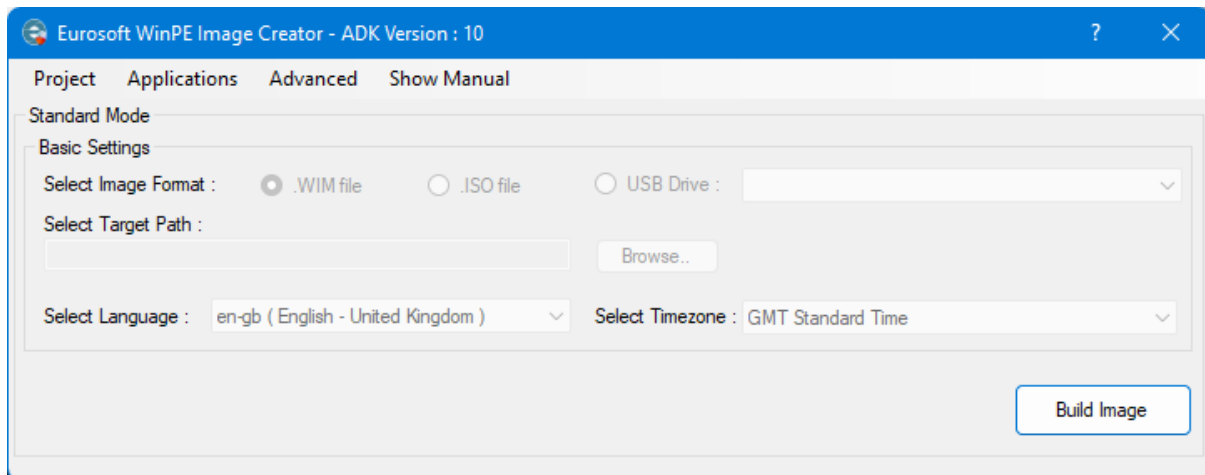
Similarly if you have selected to install Zerodata Windows that product will exist in the same Eurosoft Apps directory.

igram Files (x86) > Eurosoft (US) Inc > WinPE Image Creator > EurosoftApps > ZeroDataWindows

Name	Date modified	Type	Size
Drivers	10/06/2022 15:02	File folder	
ExternalDLLs	10/06/2022 15:02	File folder	
x86	10/06/2022 15:02	File folder	
ChangeLog.txt	30/05/2022 16:54	Text Document	24 KB
ManufacturerInfoDLL.dll	30/05/2022 16:54	Application exten...	166 KB
OptionQ.dll	30/05/2022 16:54	Application exten...	150 KB
zdb.cow	30/05/2022 16:54	COW File	13,112 KB
zdbf.cow	30/05/2022 16:54	COW File	36,392 KB
ZeroData for Windows Manual.pdf	30/05/2022 16:54	Microsoft Edge P...	7,657 KB
ZeroDataReport.dll	30/05/2022 16:54	Application exten...	94 KB
ZeroDataReport.repx	30/05/2022 16:54	REPX File	330 KB
ZeroDataReporter.dll	30/05/2022 16:54	Application exten...	137 KB
ZeroDataReporter.dll.config	30/05/2022 16:54	CONFIG File	1 KB
ZeroDataWindows.exe	30/05/2022 16:54	Application	8,297 KB

## Getting Started with Eurosoft WinPE Image Creator

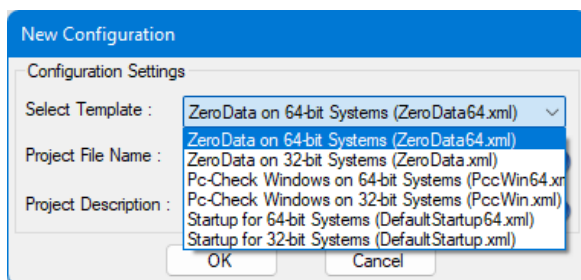
When you start WinPE Image Creator it will open the following screen.



From this screen you can create images in several formats for use with Pc-Check Windows or ZeroData Windows.

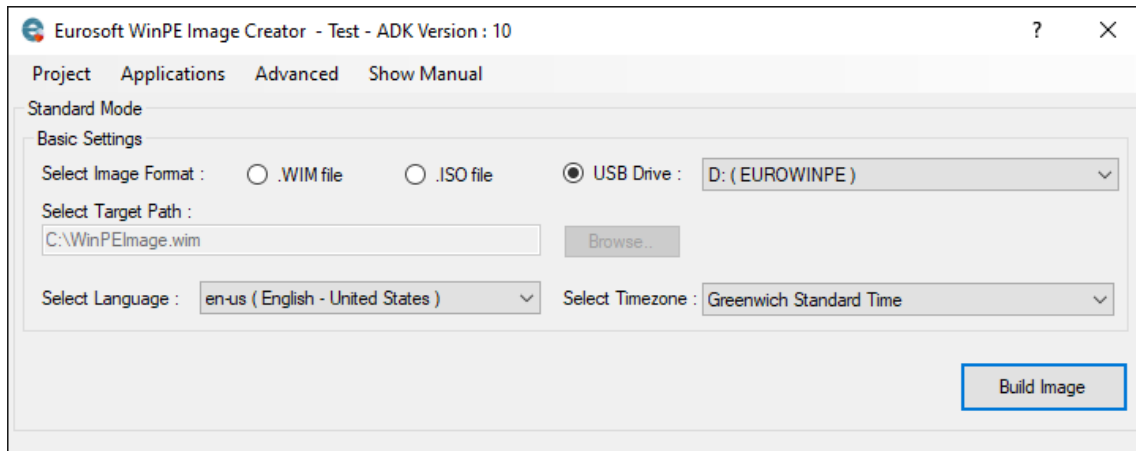
The first step is to create a new project, go to Project → New.

A dialog will open allowing you to give your project a name.



From Select Template dropdown box, you can select to build a project using either 32 or 64 Bit Windows PE. Please check available entries in this dropdown box - depending on the product you

have purchased, there should be multiple template entries that includes a default script to execute Pc-Check Windows or ZeroData Windows. You can also give your project a name and a description to allow you to edit and reuse it at any time. Multiple projects can be created and saved.



The screen will now show the project that you are editing, the Template file being used and the target platform. Options are available to change the location of the image file to be created, the keyboard and Locale settings, and the amount of scratch space to allow for the program. If you select to build a USB image it will be directly written to a USB Flash drive connected to the system. If no USB Flash drive is inserted this option will be “greyed” out.

**Note: Regular USB drives MUST have a capacity of at least 2GB, and not greater than 32GB. Depending on your license type, only Eurosoft Program Devices may be allowed for writing USB images.**

This is all that is required to create a bootable image or USB drive with Eurosoft Pc-Check Windows or ZeroData Windows, using the default options.

## Advanced Options

The advanced options allows you to open some dialog screens that will let you change the default configuration of the Microsoft Windows PE, and to add additional drivers, change Packages, add files, and edit both the Startnet.cmd file and RunMe.cmd file.

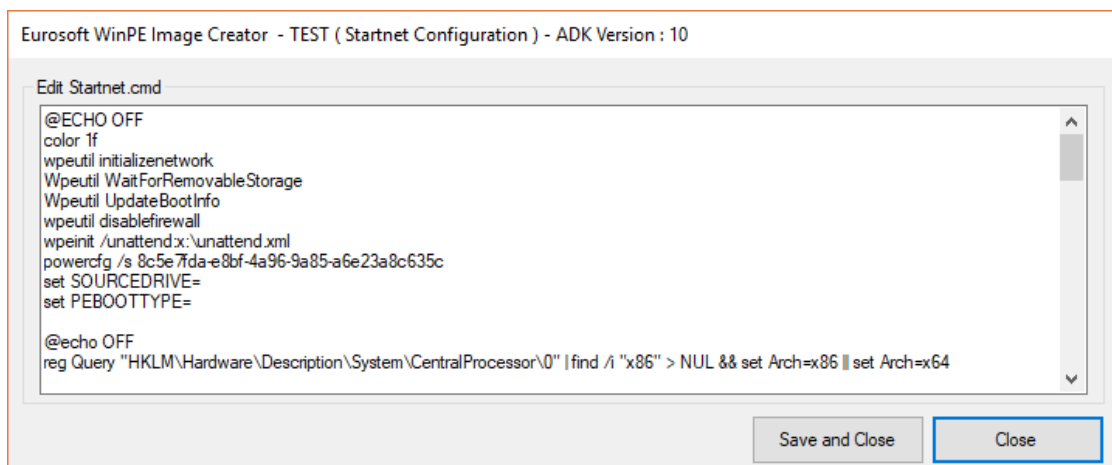
Care should be taken when using these options.

### STARTNET.CMD

The Startnet.Cmd file is the file that is executed first when Windows PE is booted.

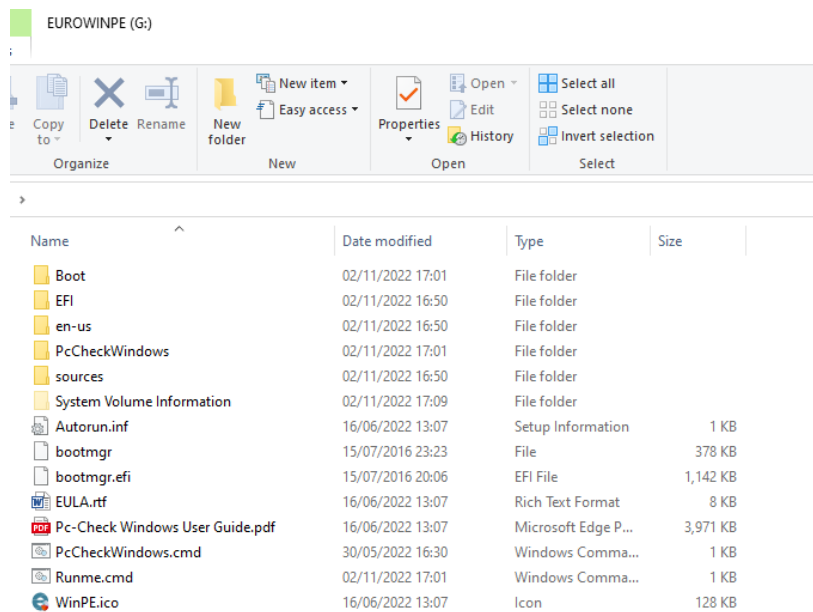
Note: Any custom file created that is created outside of the ImageCreator e.g., a pre-made Startnet.cmd or WinpeShl.ini etc. that is added to a project through the Add Files Process will take precedence over any modifications made inside the project template.

Note: The startnet.cmd file is embedded inside of the mounted image and therefore modification requires image recreation. Unless you are making a WIM image file, we recommend not to modify this file when using the predefined product templates and make any customizations via the RunMe.cmd.



### RUNME.CMD

The startnet.cmd file will call the Runme.cmd file found on the root of the target media once the image has been built.



Name	Date modified	Type	Size
Boot	02/11/2022 17:01	File folder	
EFI	02/11/2022 16:50	File folder	
en-us	02/11/2022 16:50	File folder	
PcCheckWindows	02/11/2022 17:01	File folder	
sources	02/11/2022 16:50	File folder	
System Volume Information	02/11/2022 17:09	File folder	
Autorun.inf	16/06/2022 13:07	Setup Information	1 KB
bootmgr	15/07/2016 23:23	File	378 KB
bootmgr.efi	15/07/2016 20:06	EFI File	1,142 KB
EULA.rtf	16/06/2022 13:07	Rich Text Format	8 KB
Pc-Check Windows User Guide.pdf	16/06/2022 13:07	Microsoft Edge P...	3,971 KB
PcCheckWindows.cmd	30/05/2022 16:30	Windows Comma...	1 KB
Runme.cmd	02/11/2022 17:01	Windows Comma...	1 KB
WinPE.ico	16/06/2022 13:07	Icon	128 KB

The contents of the runme.cmd file is shown below (this example is for use with the Pc-Check Windows product):

```
@ECHO OFF
```

```
ECHO Starting PcCheckWindows
```

```
cd PcCheckWindows\
```

```
@Start "" /B /Wait PcCheckWindows.exe
```

```
IF %ERRORLEVEL% == 0 GOTO NOERROR
```

```
ECHO The Application returned return code %ERRORLEVEL%.
```

```
GOTO END
```

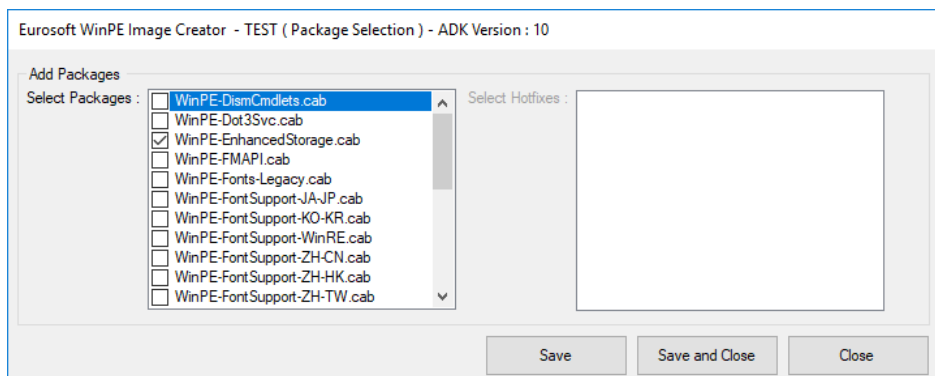
```
:NOERROR
```

```
ECHO The Application returned no errors.
```

```
:END
```

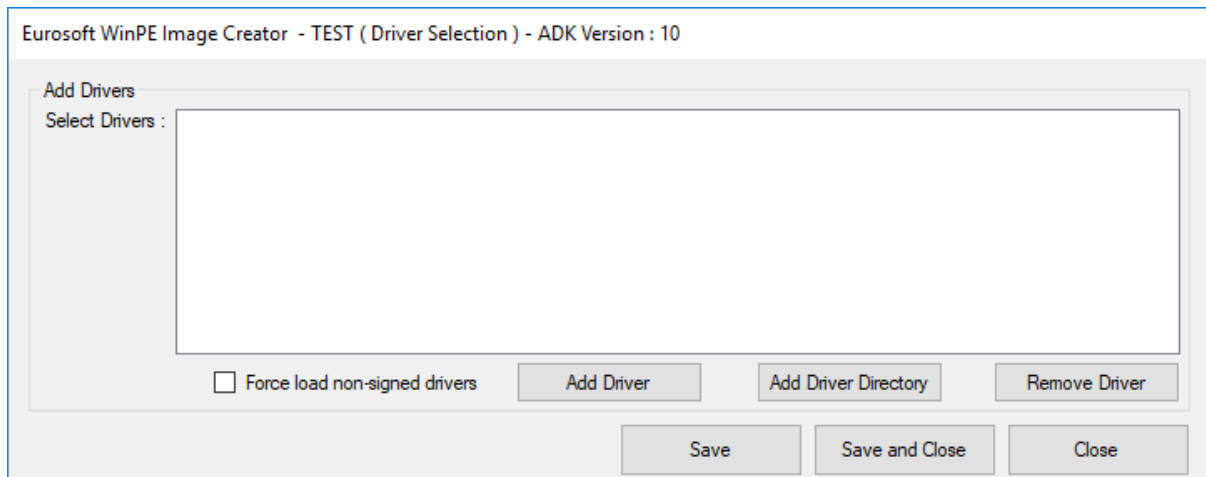
```
EXIT /B %ERRORLEVEL%
```

## Packages



The packages that are already included and that are required to run Pc-Check Windows and ZeroData are highlighted. Changing these will mean that either Pc-Check Windows or ZeroData does not have full functionality or will not start.

## Drivers

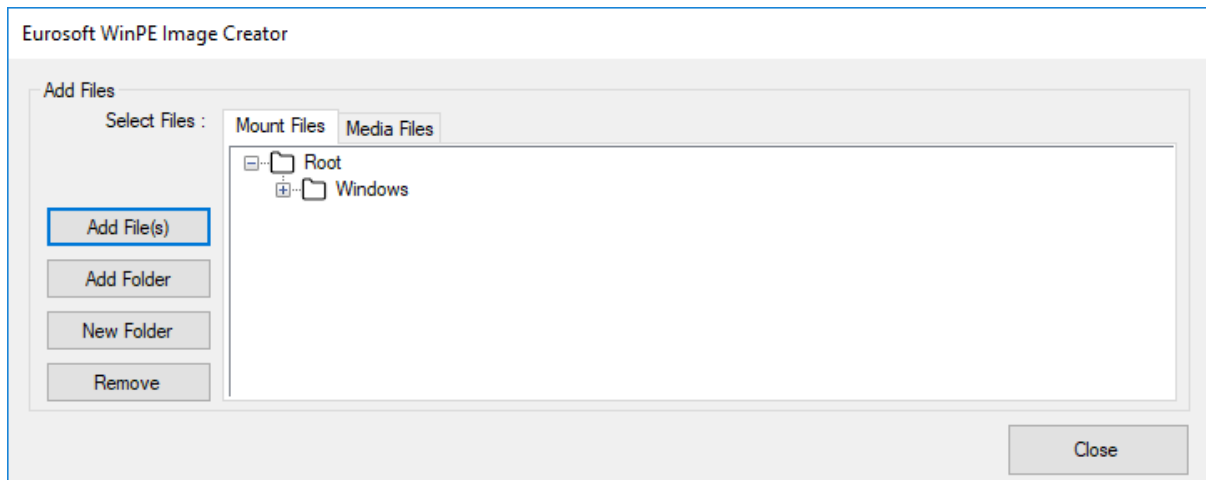


Add Driver is used to add an individual driver to the image. Add Driver Directory can be used when you need to add several drivers that are all in one location. Drivers can also be removed.

All drivers will be checked during the installation to ensure that they are for the correct operating system version and that they are digitally signed. If you need to load an unsigned driver (not recommended) you must check the Force load non-signed drivers checkbox.

## Files

Add custom files or folders to the image using the files option.

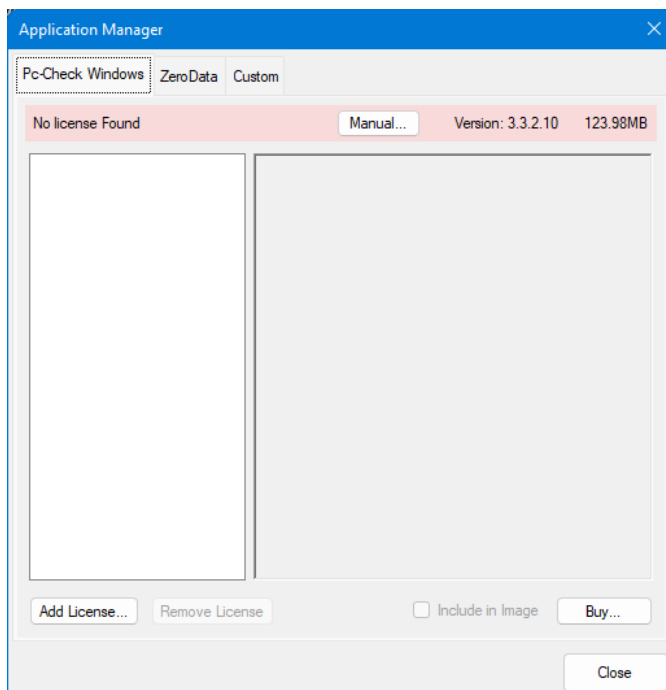


## Applications Options

### View in file explorer

To open the directory where the product is located select this option. You may want to do this to execute diagnostics on your technician PC.

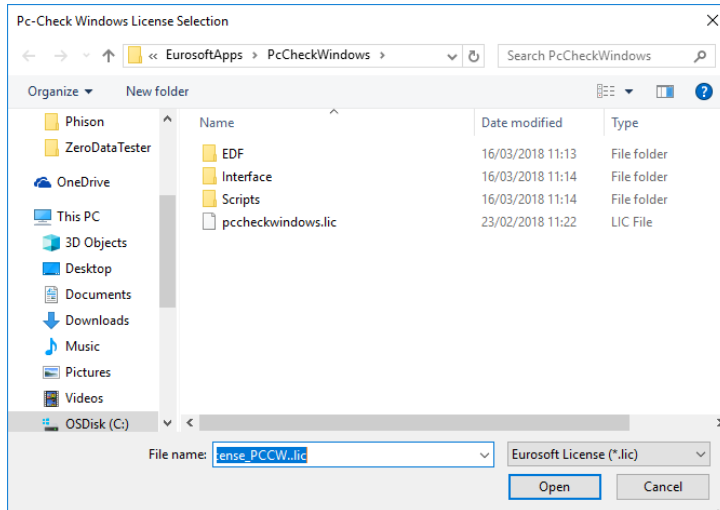
## Manage Applications



Pc-Check Windows is selected as the default application. Additional applications can be added using the buttons available. All added applications and application folders will be added under MyApplications folder of the created media.

Here you can be redirected from the products webpage to the online shop if you wish to purchase a license for the products available using the Buy... button.

If you have not already done so you must reference a valid license file for the product, you can reference to it here for inclusion in the final deployed image by clicking on the License... button.

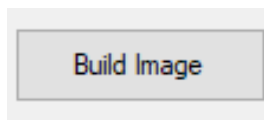


This then creates a copy of your license in the following location, you must have a valid license for the product to be able to create the final image.

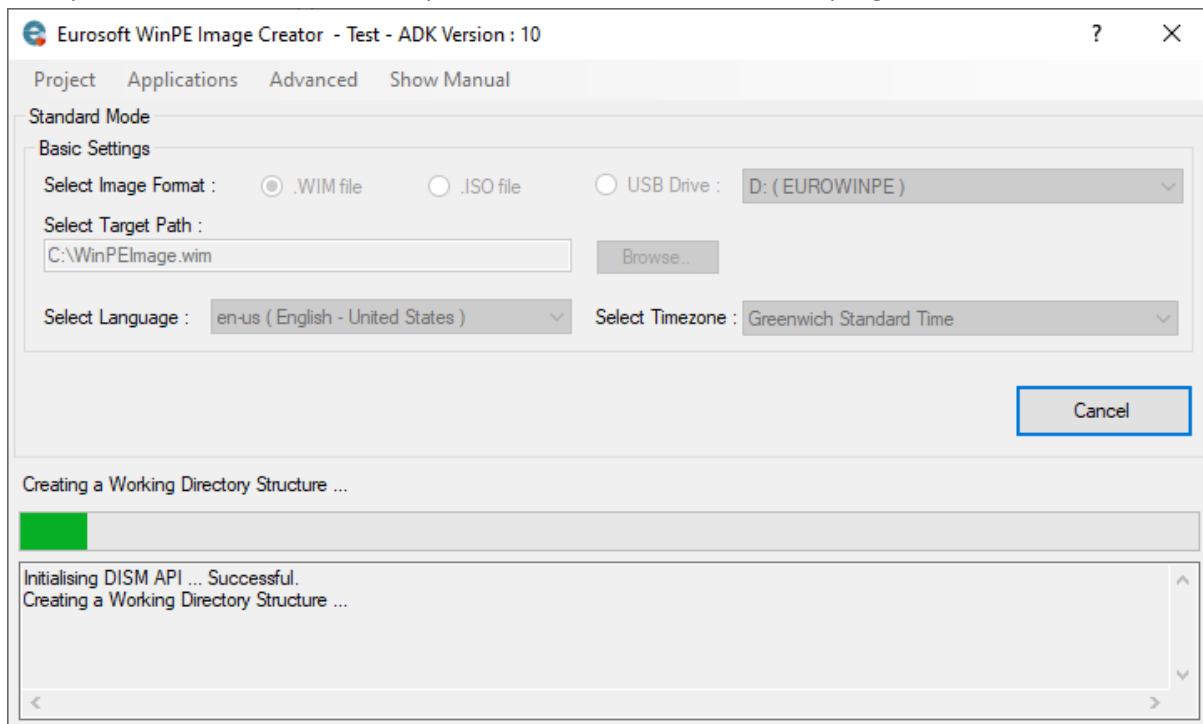
`\Program Files (x86)\Eurosoft (US) Inc\WinPE Image Creator\EurosoftApps\Licenses`

Tick the 'Include in image' tick box if you wish to include the product in to the final image.

Click on Build Image button in the main window to build your solution.



It may take several minutes to complete, a status window shows the progress of the build.



You can select from WIM (Advanced network booting), ISO (for subsequent CD burning) or USB (typical recommended use) targets.

Once the build is complete successfully your target media is ready for use, in the case of USB insert the device in to a spare slot on your target unit under test, select the boot device from the systems boot menu and the WinPE image will self-boot to your desired application execution.

**Note: Please refer to the user manual of Eurosoft application you have purchased before executing the application for the first time. This is a necessity if you want to execute Pc-Check Windows or ZeroData Windows from a command line script. If you want an automated boot and execute operation, then you will need to change Startnet.cmd to call required parameters and then subsequently build your WinPE image.**

**User Manuals are located in the respective EurosoftApps sub directory such as \Program Files (x86)\Eurosoft (US) Inc\WinPE Image Creator\EurosoftApps\ZeroData or \Program Files (x86)\Eurosoft (US) Inc\WinPE Image Creator\EurosoftApps\PcCheckWindows\Manuals**